

INSIDE Cityscapes • Collecting Fine Art in Southern States • Miami Report

64

AMERICAN

art COLLECTOR

PREVIEWS OF WORKS FOR SALE AT
UPCOMING SHOWS COAST TO COAST

FEBRUARY 2011



\$6.95



Jung Han Kim on exhibit. Kim brings dual sensibilities to his paintings of San Francisco neighborhoods. During the composition process he examines the scene from many views doing what he calls "slow looking" to capture all of the elements into a unified whole, including the mundane details of power poles, overhead wires, weeds and street cracks.

Kim has lived and worked for the last decade in San Francisco where he is a painting instructor at the Academy of Art University. He was born and raised in Seoul, South Korea, where he studied art, worked as a newspaper illustrator and wrote a book about informational graphics. Each painting is informed by the opposing natures of his diverse experiences and is a meditation on dualities: land and sky, man and nature, micro and macro.

Tony Armendariz

2000 Lexington Drive
Palatine, IL 60074
tony@armendarizart.com
www.ArmendarizArt.com

Award-winning artist **Tony Armendariz** graduated from the American Academy of Art in Chicago where he was born and raised. While at the Academy, Armendariz studied under renowned instructor Irving Shapiro. Under the tutelage of Shapiro, Armendariz honed his skills while depicting the cityscape scenes as he had done since childhood.

"I used to play in abandoned buildings when I was a kid. I used to imagine who lived or worked in them and what their stories were," Armendariz explains. He continues his contemporary realist style of painting exclusively with watercolor, a medium that has drawn him in with its immediacy and unpredictability.

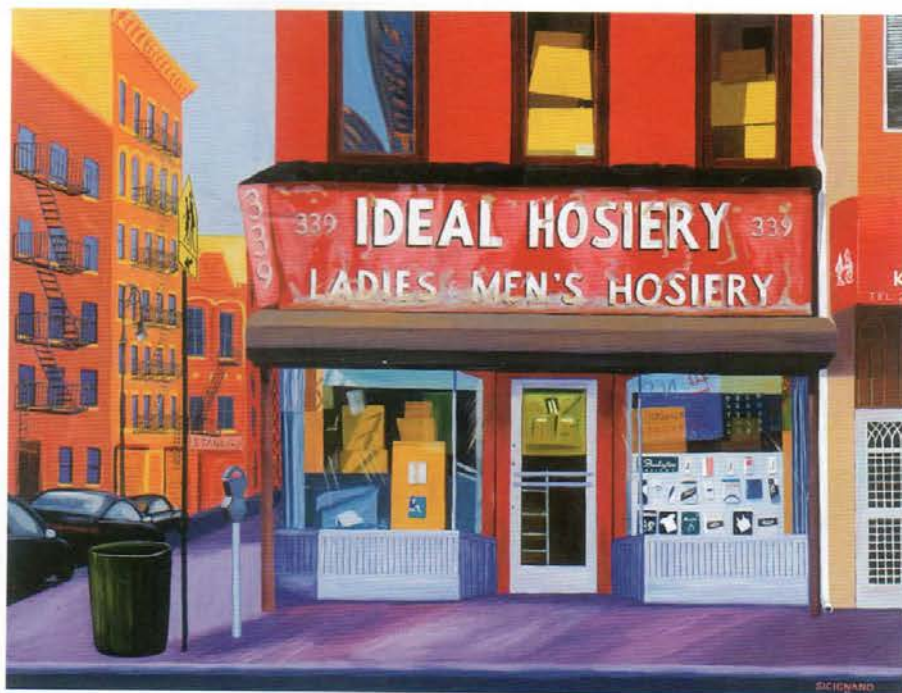
Aside from his many travels throughout the United States, the artist has developed themes featuring subject matter he found in Europe and even Cuba, which currently is a major theme of his work.

Armendariz lives in Palatine, Illinois, just outside of Chicago, where he teaches and serves as director of the Illinois Watercolor Society.

Richardson Gallery of Fine Art

3670 S. Virginia Street
Reno, NV 89502
(775) 828-0888
(800) 628-0928

Richardson Gallery of Fine Art has one of the largest selections and widest varieties of contemporary international art in the country. Creative, unique works, such as the romantic →



Raymond Sicignano, *Ideal Hosiery*, oil on linen, 30 x 40"



Bristol Art Gallery, *Brooklyn Bridge*, oil on canvas, 18 x 16", by Victor Bauer.



"Springtime in New York"



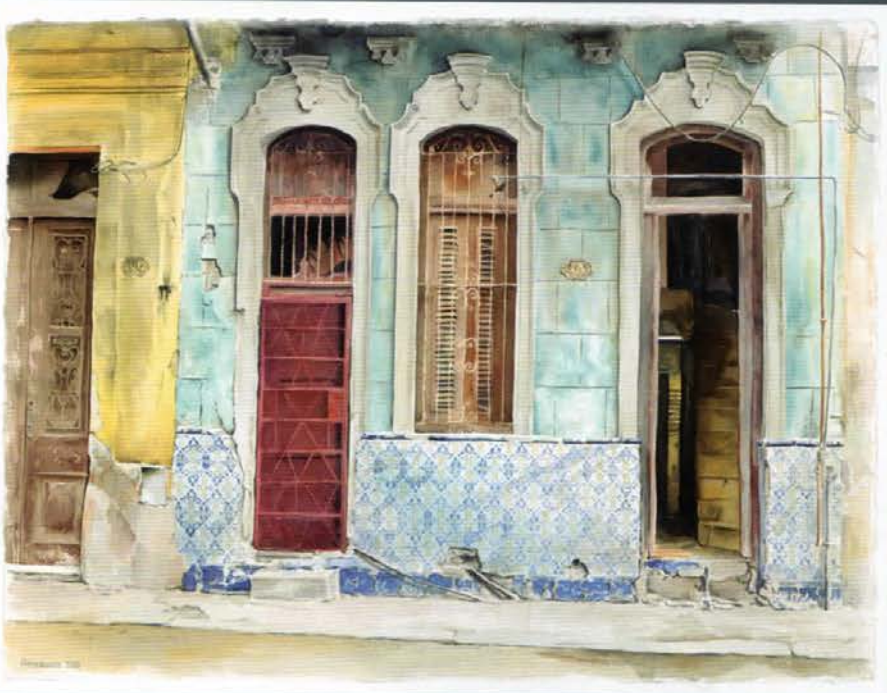
"Morning Reflections"

BOB PEJMAN

Romantic Realism

Richardson Gallery
Of Fine Art

800.628.0928



Shapes of Color 22" x 30" watercolor on paper
Award of Achievement, Florida West Arts National Juried Exhibition 2010

TONY ARMENDARIZ

www.ArmendarizArt.com • 847.971.8669 | Hilliard Gallery, Kansas City, MO • www.hilliardgallery.com

February 10 – March 10, 2011

Paintings by Tony Armendariz will be on display at the Award Winners of the Florida West Arts National Juried Exhibition 2010 Group Show.

Florida West Arts Gallery
25987 S. Tamiami Tr.
Bonita Springs, Florida 34134

Reception: Thursday, February 10
Artist will be present.



Into Murano 14" x 10"
watercolor on paper



The Studio Shop, California and Montgomery Street, oil on linen, 72 x 48", by Jung Han Kim.



RoGallery.com, Georgetown Movie Theatre, 1985, acrylic on canvas, 40 x 30", by Charles Ford.

realism of **Bob Pejman**, make this gallery stand out as a premier source for collectors.

The son of an operatic composer and a concert musician, Pejman spent his early childhood in Vienna and then moved to the United States in 1976. Pejman began painting at age 7 and by 16 had won numerous awards. However, instead of pursuing an education and career in art, Pejman entered the field of business management. It was not until 1988 that Pejman returned to the art world.

In his works, Pejman creates idyllic, tranquil worlds. "There are no people in my paintings, so you can imagine yourself in the scenes," explains the artist.

Josh Moulton Fine Art

917 W. Fletcher
Chicago, IL 60657
(773) 592-3434
www.joshmoulton.com

"I try and capture people, architecture and landscapes in a way that is original yet identifiable," says artist **Josh Moulton**.

"I try not to limit myself to one subject in case I see something different I think would be a strong painting."



Tony Armendariz, Red Brick Series: 2, watercolor, 20 x 26"

As an artist, Moulton looks for light and how it reflects on architecture and nature. Moulton explains, "Over the past five years, I have

started to paint subjects and scenes that make social commentary. I want the viewer to spend time asking questions about why I did →



Tony Armendariz, *Tim's Auto*,
watercolor, 14 x 23"



A Z Fine Arts, *Golden Glow
of Boston*, oil on canvas,
30 x 40", by Celia Judge.